

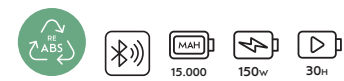


03

technology



- speaker
- powerbank
- headphones
- earbuds
- wireless chargers
- cable



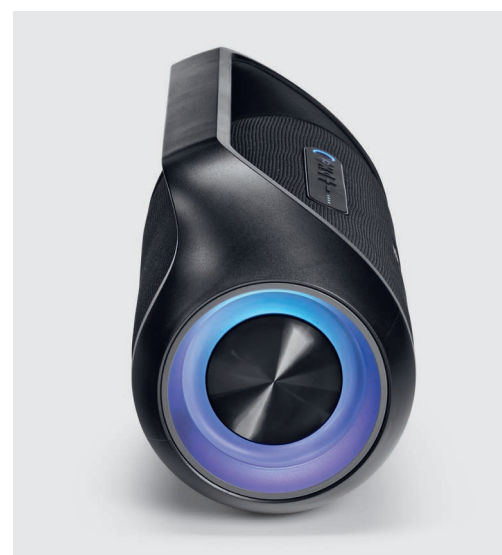
Jouncer Speaker

ASP012

Empowered by V5.1 wireless connection, this recycled ABS speaker bridges within <15m. Quicky charged at 20V/3A, it boasts 150W power output. A 15000mAh battery fuels 30H playtime @60dB SPL. It's a harmonious blend of technology and sound.

▮ 29,2 x 19,6 x 10,4 cm
⌀ DUV - 200 x 150 mm (max.)





Newton Speaker ASP006

Delivering 40W (20x2) power and crafted from rABS, this speaker resonates with clarity. A 6000mAh battery fuels 5 hours of immersive play. IPX5 waterproof, it's your musical companion. Wireless 5.0 connection extends the range up to 10m.

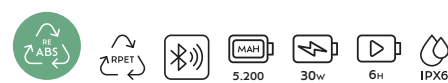
∟ 14,3 x 18,8 x 36,6 cm
∅ LSR - 35 x 15 mm (max.)



Hawking Speaker ASP016

This recycled speaker is made from rABS and rPET. 4.000mAh (dual 2000mAh batteries) provide ample playtime. Customize your sound with removable grilles. Stay connected effortlessly with wireless connection and 2 x 5W power.

∟ 11,5 x 4,5 x 18,5 cm
∅ DUV - 150 x 85 mm (max.)

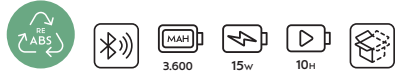


Avicenna Speaker ASP015

Eco-friendly speaker made from rABS and rPET. Dual 15W drivers deliver a powerful 30W audio experience. Enjoy extended playtime with a 5200mAh battery (2600mAh x 2) and seamless wireless connectivity. Sustainable sound at its best with IPX6 protection.

∟ 10,5 x 13,5 x 10,5 cm
∅ LSR - ∅25 mm (max.)





Soundview Speaker

ASP001

A 15W marvel, speaker that drives rich bass. With a built-in LCD to display song details. Dual EQ modes cater for sound. Enjoy 10 hours of playtime due to the 3600mAh battery. Carefully crafted from recycled ABS plastic, a symphony of innovation and sustainability.

▮ 18,8 x 11,2 x 8,2 cm
⊘ DUV - 170 x 100 mm (max.)



Soundo Speaker

ASP002

Pumping 5W, this speaker rocks with potent bass from its driver. A grid ready to showcase a full colour logo. Playtime of 6 hours. Eco-conscious with recycled ABS plastic, it's music and sustainability in complete harmony.

▮ 10,5 x 7 x 3 cm
⊘ DUV - 40 x 40 mm (max.)





Dipster Speaker

ASP003

A portable speaker with IPX 7 waterproof protection and a built-in handle. Deep bass rumbles through its 5W might. Customize with removable grid and plate for digital prints. Playtime of 10 hours. Eco-friendly, made from recycled ABS plastic.

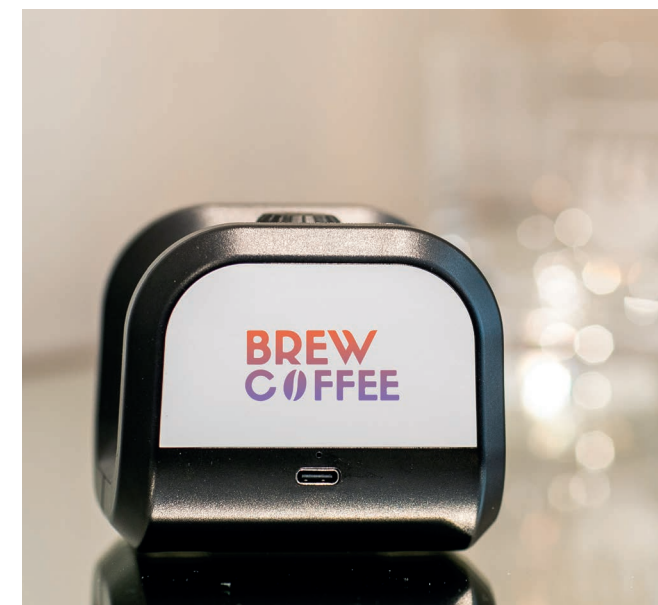
▮ 12,4 x 12,9 x 2,8 cm
 ∅ DUV - 100 x 100 mm (max.)



103



106



Boomz Speaker

ASP004

Compact yet bass-rich, this pocket-sized speaker packs a 800mAh battery. With a 5W driver, it impresses. Double-sided printable areas offer customization. Playtime for 5 hours. Crafted from recycled ABS plastic, it's music and sustainability combined.

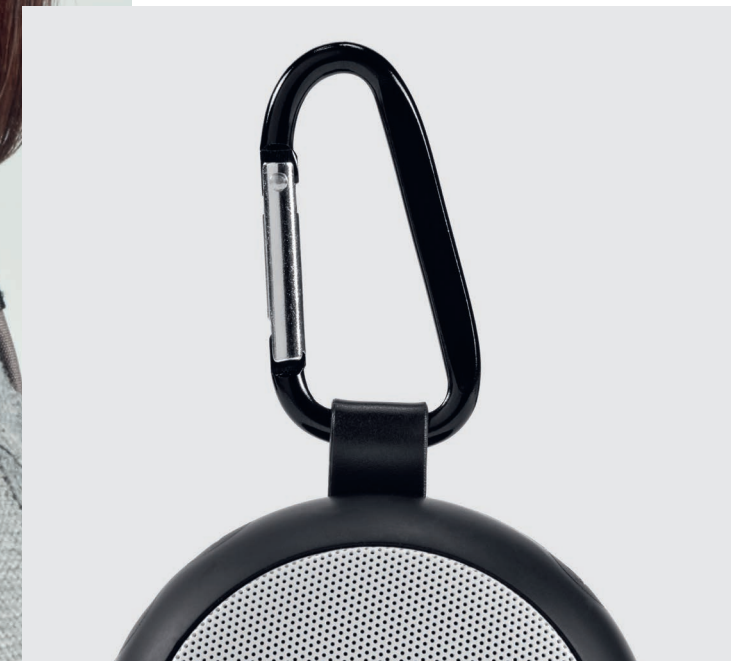
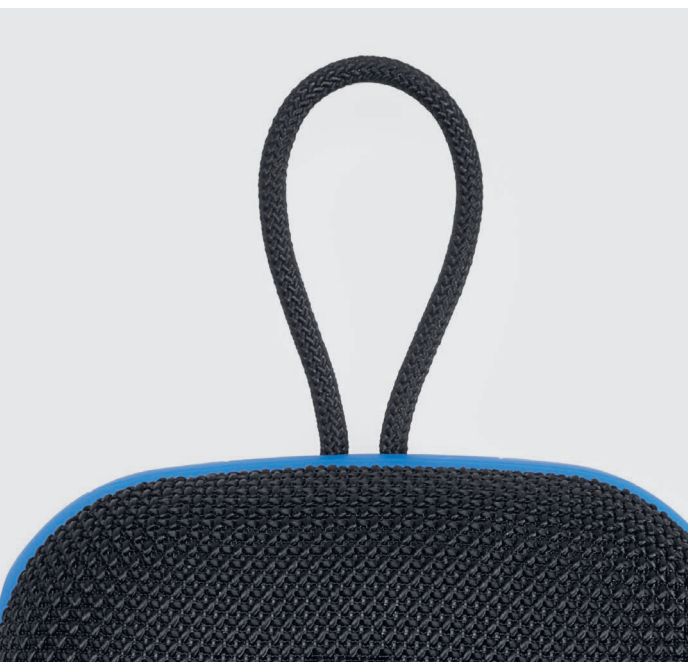
▮ 8 x 7 x 7,5 cm
 ∅ DUV - 65 x 35 mm (max.)



103



106

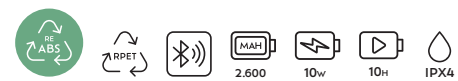


Darwin Speaker

ASP014

This is a 5W speaker, equipped with a 3.7V 1.000mAh battery for long-lasting playtime. Its wireless connection ensures seamless affinity. Plus, enjoy the flexibility of removable metal grilles for a full customization and a carabiner to carry it around.

∇ ø8 x 3,9 cm
 ∅ DUV - ø80 mm (max.)



Da Vinci Speaker

ASP009

A gem at 10W, this speaker delivers a rABS body and rPET grill. Powered by a 2600mAh battery, it fuels 10 hours of dynamic play. Uniquely, the removable grill offers direct printing, personalizing your experience. It also offers a IPX4 protection.

∇ 10 x 4,6 x 10 cm
 ∅ DUV - 100 x 100 mm (max.)



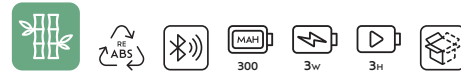


Gauss Speaker

ASP013

Introducing the rABS portable speaker: seamless wireless connectivity, 300mAh battery for 1.5hrs of continuous playtime. Compact, vibrant and perfect for your on-the-move musical adventures. Packed in an individual kraft box.

∅ 6 x 5 cm
 PDP - 25 x 30 mm (max.)



Einstein Speaker

ASP005

Delivering 3 watts of sheer auditory delight, this speaker is a marvel. Its USB-C charging door ensures convenience. With 400mAh, enjoy 3 hours of lively playtime. Crafted from bamboo and rABS, its eco-friendliness echoes.

∅ 7,5 x 4,5 cm
 PDP - 25 x 20 mm (max.)





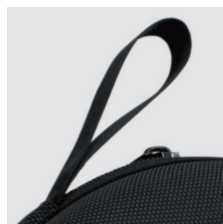
Reference	🔍	📄	↗️	🔋	🔌	🎵	⚡	🔌	IPX	📶	🎨
ASP001	106	♻️ ABS	18,8 x 11,2 x 8,2 cm	3600	✔️	10h	2h	15W	-	✔️	●●○
ASP002	107	♻️ ABS	10,5 x 7 x 3 cm	800	✔️	6h	2h	3W	-	✔️	●
ASP003	108	♻️ ABS	12,4 x 12,9 x 2,8 cm	1800	✔️	10h	2.5h	5W	🌧️ IPX7	✔️	●○
ASP004	109	♻️ ABS	8 x 7 x 7,5 cm	800	✔️	5h	2h	5W	-	✔️	●○
ASP005	113	♻️ ABS ♻️ RPET	ø7,5 x 4,5 cm	400	✔️	3h	1h	3W	-	❌	●
ASP006	106	♻️ ABS	14,3 x 18,8 x 36,6 cm	6000	✔️	5h	2-3h	40W	🌧️ IPX5	✔️	●
ASP009	110	♻️ ABS ♻️ RPET	10 x 4 x 10 cm	2600	✔️	10h	3-4h	10W	🌧️ IPX4	❌	●●●●
ASP012	102	♻️ ABS	29,2 x 19,6 x 10,4 cm	15000	✔️	30h	3h	150W	-	❌	●
ASP013	112	♻️ ABS	ø6 x 5 cm	300	✔️	1.5h	1h	3W	-	❌	●●●●●
ASP014	111	♻️ ABS	ø8 x 3,9 cm	1000	✔️	1.5h	2h	5W	-	❌	●
ASP015	105	♻️ ABS ♻️ RPET	10,5 x 13,5 x 10,5 cm	5200	✔️	6h	4-5h	30W	🌧️ IPX6	✔️	●
ASP016	105	♻️ ABS ♻️ RPET	11,5 x 4,5 x 18,5 cm	4000	✔️	4h	3h	10W	-	✔️	●

- 🔍 Product Page
- 📄 Materials
- 🔋 Capacity Case (mAh)
- 🔌 Charging Connector
- 🎵 Play Time
- ⚡ Charging Time
- 🔌 Max Output Power
- 📶 TWS
- 🎨 Available Colours





133



Ultraz Headphones

AHD001

Immerse in serenity with these Active Noise Canceling headphones. 40mm drivers and 4 AI-powered mics ensure unparalleled audio. Travel case included. Enjoy 40+ hours of playtime. Crafted with care from recycled ABS Plastic.

↗ 18,5 x 19 x 9 cm
 ⌀ PDP - 30 x 15 mm (max.)



103



107



106



Echodeep Headphones

AHD002

Elevate your sound experience with over-ear headphones delivering rich bass through 40mm drivers. Enjoy comfort with soft earpads. Revel in 30+ hours of playtime and embrace sustainability with recycled ABS plastic construction.

↗ 18,5 x 18,8 x 5 cm
 ⌀ PDP - 30 x 15 mm (max.)

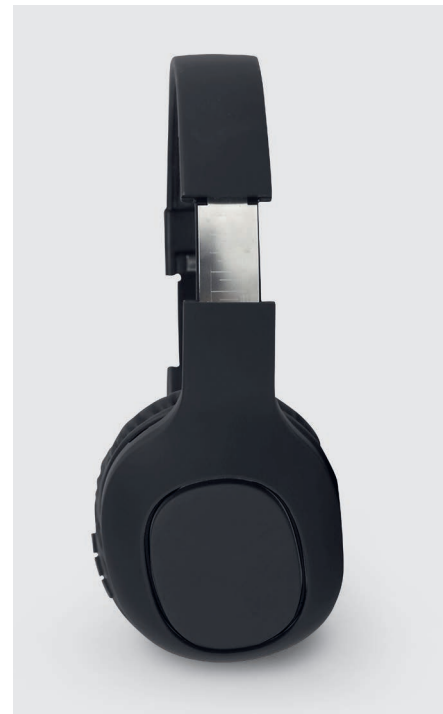
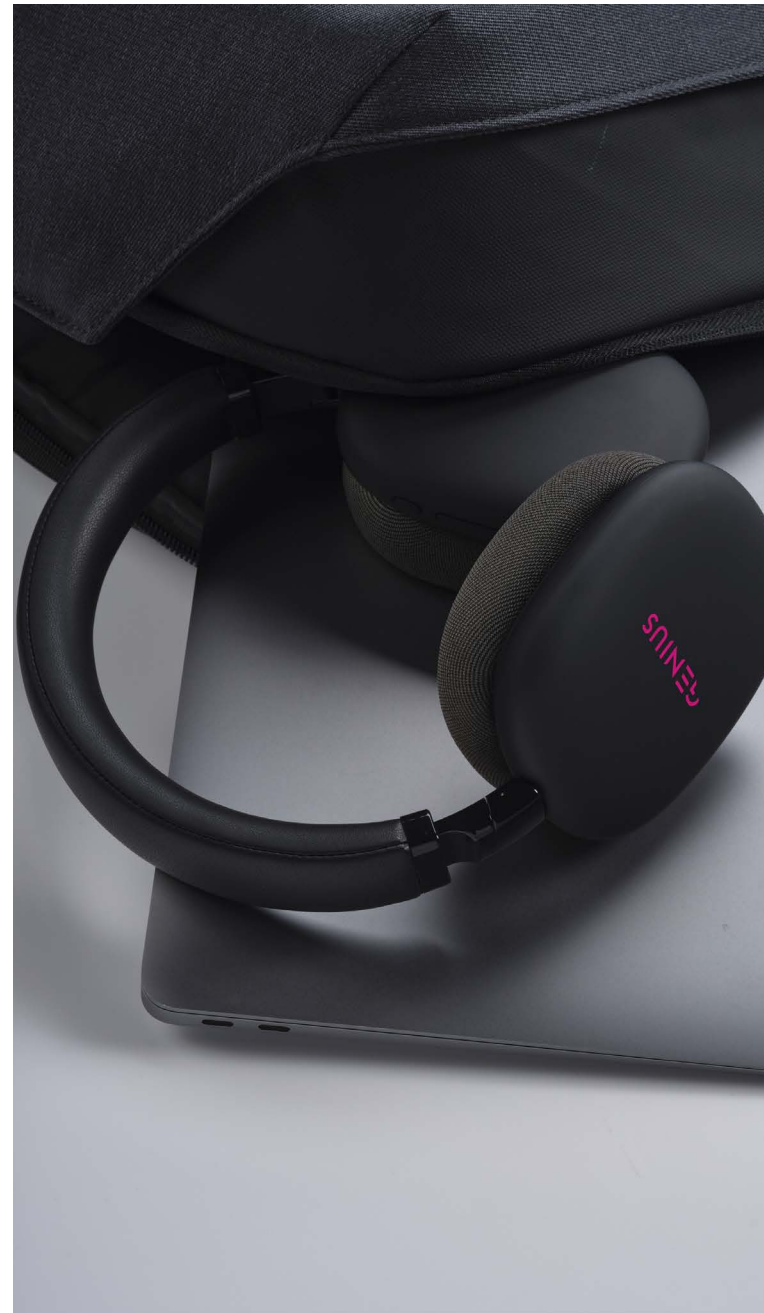


Galileo Headphones

AHD003

Headphones with seamless wireless connection. rABS body and earmuffs unite style and sustainability. Up to 8h autonomy keeps you tuned in. USB-C door simplifies charging. Your choice for an eco-friendly sound experience.

↗ 18,5 x 18,4 x 7,5 cm
 ⌀ PDP - 30 x 15 mm (max.)



Copernicus Headphones

AHD007

Crafted in eco-friendly rABS, these wireless headphones have 16 hours playtime, amplify sound with ANC, house a mic and charge effortlessly with USB-C. All carefully packed inside a recycled cardboard individual box.

↗ 19 x 18 x 8,3 cm
 ⌀ SCR - 50 x 50 mm (max.)





103



Faraday Headphones

AHD004

These headphones blend eco-luxury: in rABS and cork details. Ear pads that amplify comfort and a wireless connection to make them easier to use. 8h autonomy, USB-C door for seamless power. Sound and sustainability in perfect harmony.

▮ 19 x 17 x 4,5 cm
⌀ LSR - 45 x 30 mm (max.)



Fleming Headphones

AHD005

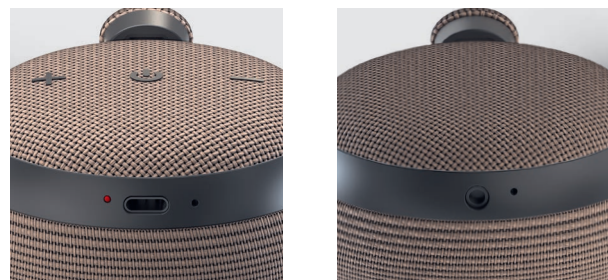
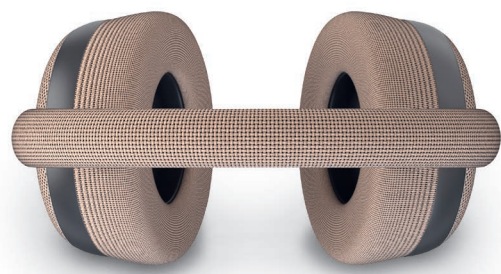
Immerse in wireless bliss with these headphones. Epitomize eco-luxury: rABS and bamboo details. The ear pads guarantee comfort. 8 hour autonomy, while the USB-C door ensures swift charging.

▮ 19 x 17 x 4,5 cm
⌀ LSR - 30 x 45 mm (max.)



103





Bell Headphones

AHD009

ANC headphones made with sustainability: rABS and recycled metals. Comfortable ear pads echo the theme. Up to 20h autonomy thanks to the 500mAh battery and USB-C convenience complete the harmony of design and function.

↗ 17,5 x 20,5 x 4,2 cm
 ⌀ TRS - 40 x 40 mm (max.)

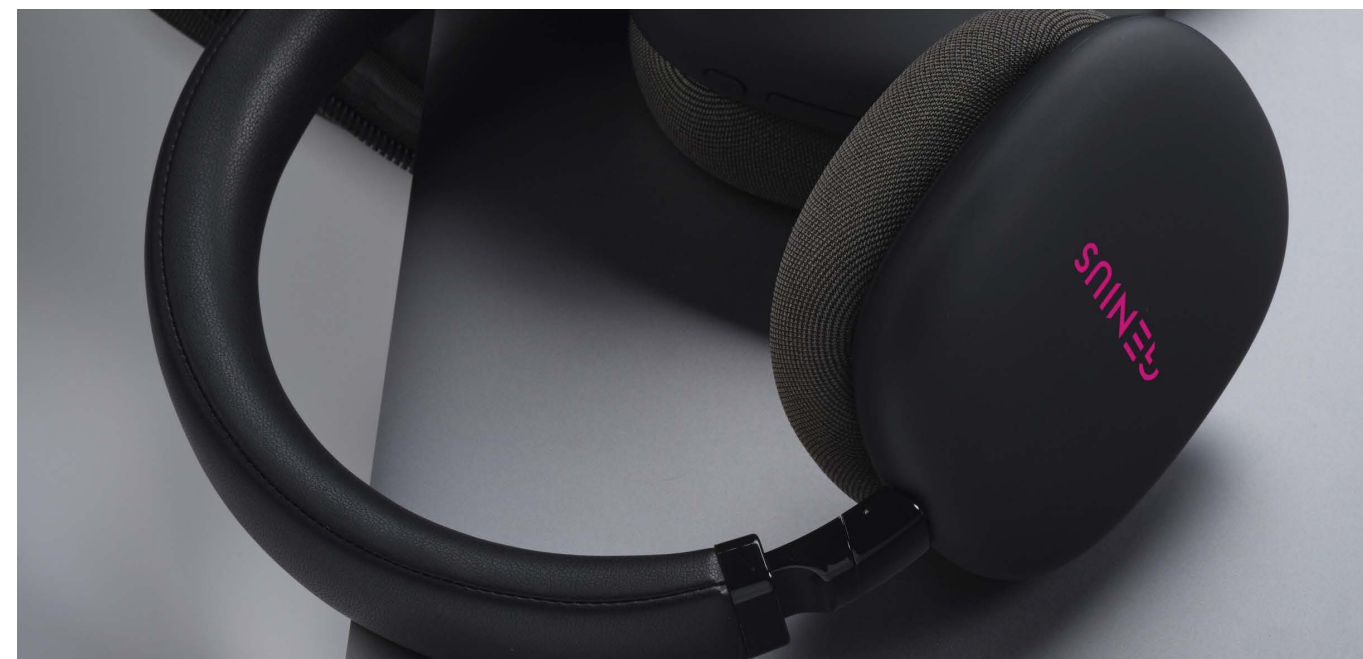


Reference	Product Page	Materials	Capacity Case (mAh)	Charging Connector	Play Time	Charging Time	Driver Size	Frequency Response	Range	IPX	ANC System	Hands-free	Available Colours
AHD001	116	rABS	300	✓	30h	2.5h	40mm	100-15	10m	✗	✓	✓	●
AHD002	117	rABS	300	✓	30h	2.5h	40mm	100-20	10m	✗	✗	✓	● ● ●
AHD003	118	rABS	400	✓	8h	1.5h	60mm	20-20	10m	✗	✗	✓	● ● ● ●
AHD004	120	rABS	400	✓	8h	3-4h	30mm	20-20	10m	✗	✗	✓	●
AHD005	121	rABS	400	✓	8h	3-4h	30mm	20-20	10m	✗	✗	✓	●
AHD007	119	rABS	400	✓	16h	3h	40mm	20-20	10m	✗	✓	✓	● ●
AHD009	122	rABS	500	✓	20h	2h	40mm	20-20	10m	✗	✓	✓	● ● ● ●

Product Page
Charging Connector
Driver Size
ANC System

Materials
Play Time
Frequency Response
Hands-free

Capacity Case (mAh)
Charging Time
Range
Available Colours





FusionBeat Earbud

AER001

Revolutionary 3-in-1: earbuds, speaker and powerbank. Features 5000mAh battery, a 5W speaker with more than 5 hours of playtime and earbuds with TWS technology. All crafted sustainably with rABS.

▮ 3,1 x 10,5 x 7 cm
⊘ PDP - 20 x 10 mm (max.)



Aerotunes Earbud

AER002

Earbuds reimagined: open design for workouts and cycling. Dual 120-degree rotation. Bass enhanced and playtime up to 5 hours. Crafted from rABS, innovation and sustainability meet in harmony.

▮ 10,3 x 6,1 x 3,3 cm
⊘ PDP - 50 x 40 mm (max.)





RUPIT



Ghostbuds Earbud

AER003

The future of audio meets the elegance of transparency. These sleek earbuds deliver exceptional sound with 13MM speaker drivers. With up to 6 hours of playtime on a single charge plus a compact charging case, your music never skips a beat

∇ 6 x 6 x 3 cm
 ∅ LSR - 40 x 10 mm (max.)



RUPIT



Chadwik Earbuds

AER005

Innovative with a recycled rABS body, these earbuds feature ANC and water resistance IPX4. LED indicators to show charging level. USB-C connection ensures convenience. Benefit from 8 hours of playing time with the 500mAh battery.

∇ 5,6 x 5,1 x 3 cm
 ∅ PDP - 20 x 20 mm (max.)





Pascal Earbuds

AER006

Sleek sustainability in rABS and recycled aluminium. Horizontal case design adds elegance. Enjoy 7h playtime, 400mAh battery case and convenient USB-C charging port. Elevate your listening experience with our earbuds.

▮ 5,9 x 4,6 x 2,6 cm
 ⌀ PDP - 20 x 15 mm (max.)



Pasteur Earbuds

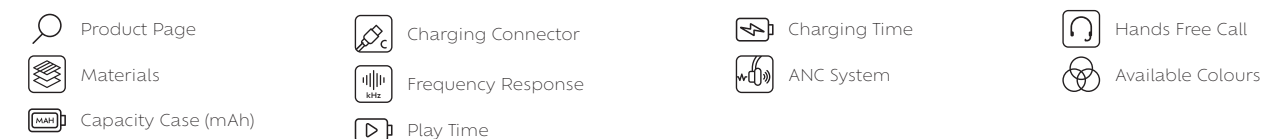
AER007

Elegantly eco: rABS earbuds and case. Horizontal sophistication. 5h playtime. Case empowers 400mAh battery, with USB-C input. Embrace sustainable style, where tech marries environmental consciousness in perfect harmony.

▮ 6,5 x 3,8 x 2,7 cm
 ⌀ PDP - 20 x 15 mm (max.)



Reference	Product Page	Materials	Capacity Case (mAh)	Charging Connector	Frequency Response	Play Time	Charging Time	IPX	ANC System	Hands Free Call	Available Colours
AER001	124	rABS	5000	✓	100-20	5h	2.5h	-	✗	✓	●
AER002	125	rABS	750	✓	100-20	5h	2h	-	✗	✓	●
AER003	126	rABS	400	✓	100-20	6h	2h	-	✗	✓	○
AER005	127	rABS	500	✓	20-20	8h	1.5h	IPX4	✓	✓	●○
AER006	128	rABS	400	✓	20-20	7h	1.5h	-	✗	✓	●○
AER007	129	rABS	400	✓	20-20	5h	2h	-	✗	✓	●○





Trinity Wireless Charger

AWC001

Experience convenience amplified: a 3-in-1 wireless charging system compatible with AirPods, phone (MagSafe) and Apple Watch. The removable MagSafe power bank, with 5000mAh, elegantly slides out. Designed sustainably from recycled ABS plastic.

↗ 7,3 x 13 x 10,3 cm
 ⌀ DUV - 50 x 20 mm (max.)



103



160



Kepler Wireless Charger

AWC002

Enjoy the elegance of bamboo with this wireless charger. With a robust 15W charging capacity, it effortlessly fuels your devices. The USB-C door ensures efficient charging. This charging solution is a statement of style and eco-consciousness.

↗ ø9 x 1 cm
 ⌀ LSR - ø70 mm (max.)



160



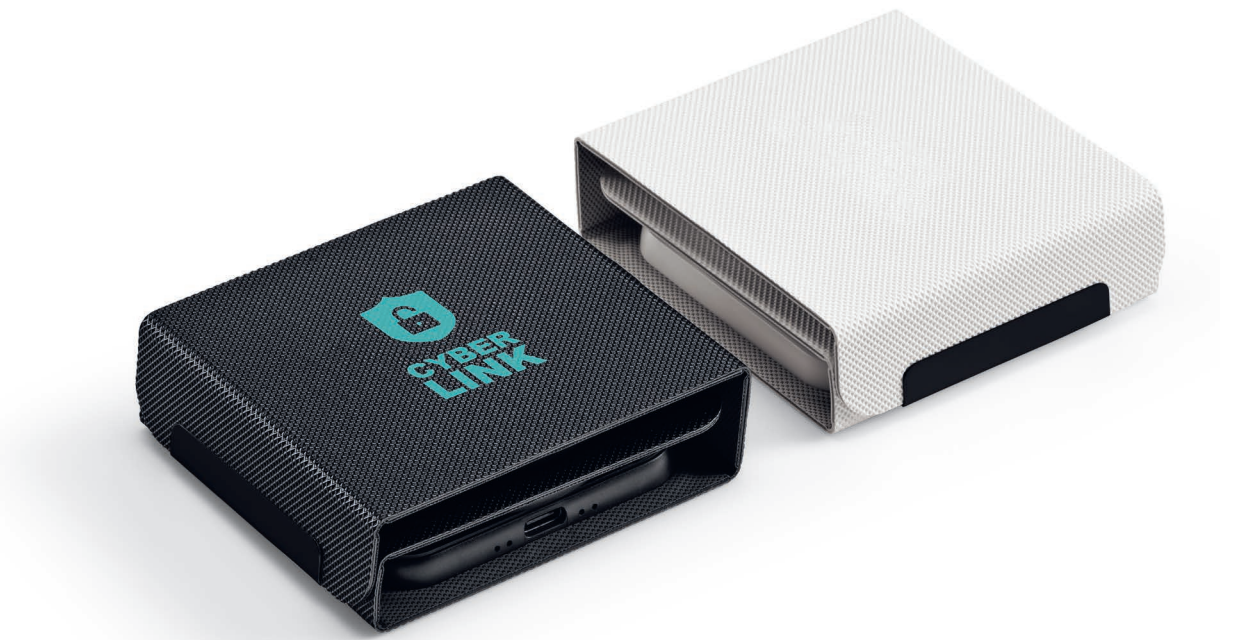
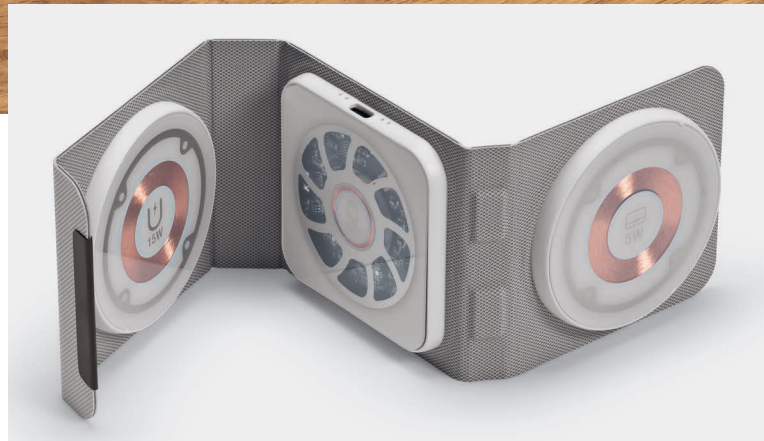
Descartes Wireless Charger

AWC003

Effortlessly blend style and function with a cork wireless charger. Experience 15W charging prowess. The USB-C door ensures connectivity, enhancing your charging. This wireless charger epitomizes a union of natural aesthetics and technology.

↗ ø9,7 x 0,7 cm
 ⌀ LSR - ø70 mm (max.)

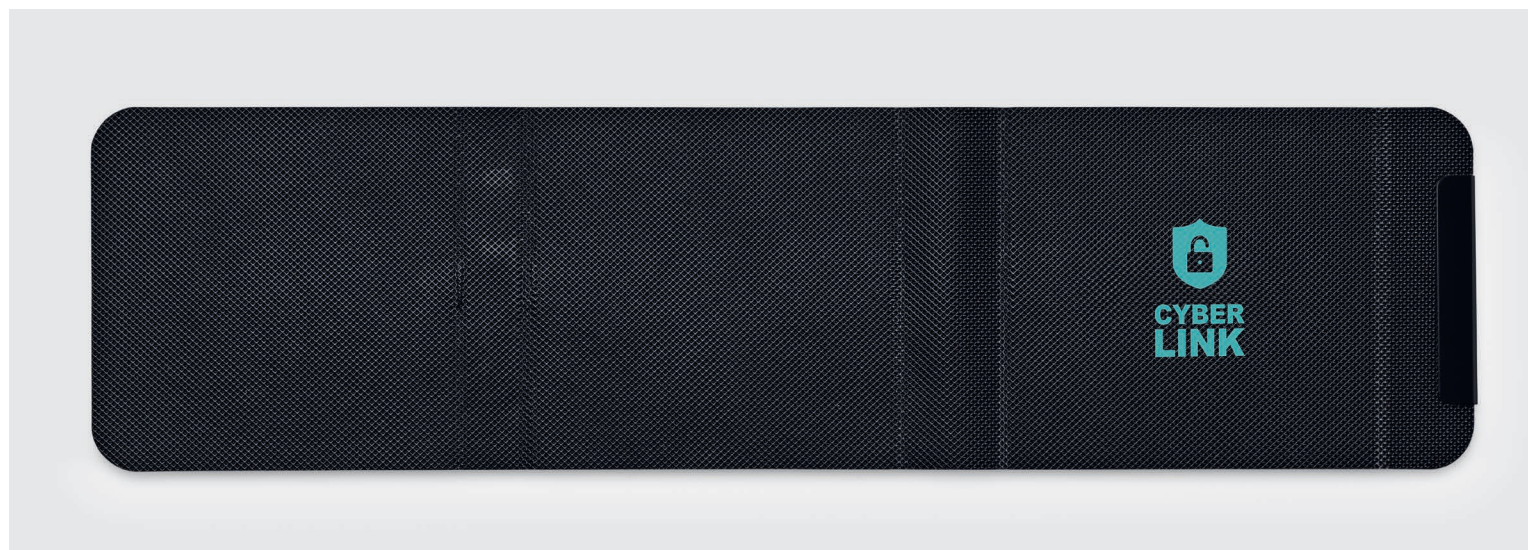




103



106



Linnaeus Wireless Charger

AWC005

Embrace the future with an eco-conscious rPU body. This wireless charger displays a combination of three charging power: 15W for fast charging, 5W for steady power and an additional 2,5W output. The inclusion of a USB-C door adds convenience.

▮ 29,8 x 7,9 x 2 cm
∅ SCR - 60 x 60 mm (max.)



Mendel Powerbank

APW005

Enjoy the power of sustainability with a body crafted from rABS. With a potent 5.000mAh capacity, it becomes your trusted energy source. Enjoy a robust 15W output, you can charge magnetically, wirelessly or with cables.

↗ 7,3 x 6,7 x 1,4 cm
 ⌀ PDP - 50 x 30 mm (max.)



Hertz Powerbank

APW006

Sustainable strength in rABS. Empower with 30.000mAh. Unleash 30W output. Connect through USB-C and USB-A, bi-directionally. LED display guides your energy journey. A fusion of eco-luxury and power.

↗ 6,8 x 14,3 x 4 cm
 ⌀ SCR - 45 x 100 mm (max.)

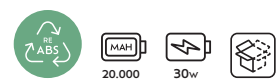
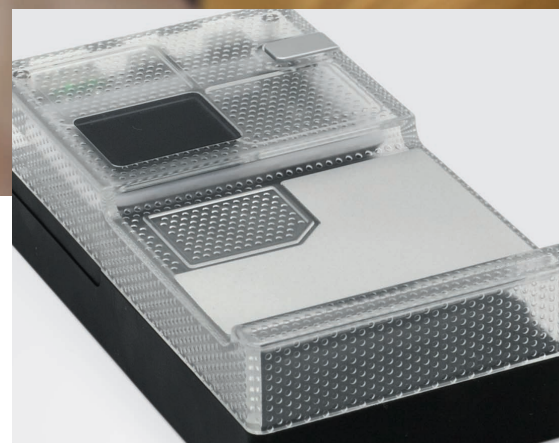


Hooke Powerbank

APW008

Embrace the freedom of uninterrupted energy with a formidable 10 000mAh battery capacity. This dependable energy source ensures that your device stands by your side throughout your daily adventures, providing you with the 15W power you need, when you need it.

↗ 8,7 x 7,1 x 1,8 cm
 ⌀ PDP - 50 x 50 mm (max.)



Elexa Powerbank

APW007

Embark on limitless adventures with our 20000mAh powerbank. Charges laptops using 2 USB A + 1 USB C ports, delivering 30W power. Stay connected as it refuels your phone up to 8-9 times. Crafted from recycled ABS.

7 x 13,1 x 3,8 cm
 LSR - 30 x 10 mm (max.)



Voltix Powerbank

APW001

Step into convenience with our 10000mAh powerbank. Equipped with 2 USB A + 1 USB C ports, it swiftly charges your devices. Revive your phone 4-5 times on a single charge, keeping you connected. Crafted responsibly from rABS.

7,6 x 14,7 x 1,8 cm
 LSR - 30 x 15 mm (max.)





Ampx Powerbank
APW002

Meet the 6000mAh powerbank: your tech companion for every journey. Its USB A + USB C combo charges swiftly, giving phones 2-3 revitalizing rounds. Thoughtfully designed with rABS, it's a sustainable choice that respects the planet.

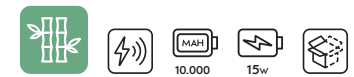
↗ 7,3 x 10,6 x 1,9 cm
⊘ PDP - 50 x 50 mm (max.)



Archimedes Powerbank
APW003

Our powerbank, made of cork and wheat straw, offers 10.000mAh of power and a 15W output, it's your companion for extended adventures. The USB-C door makes charging efficient. Experience eco-friendly power like never before.

↗ 13 x 7 x 2 cm
⊘ SCR - 40 x 40 mm (max.)

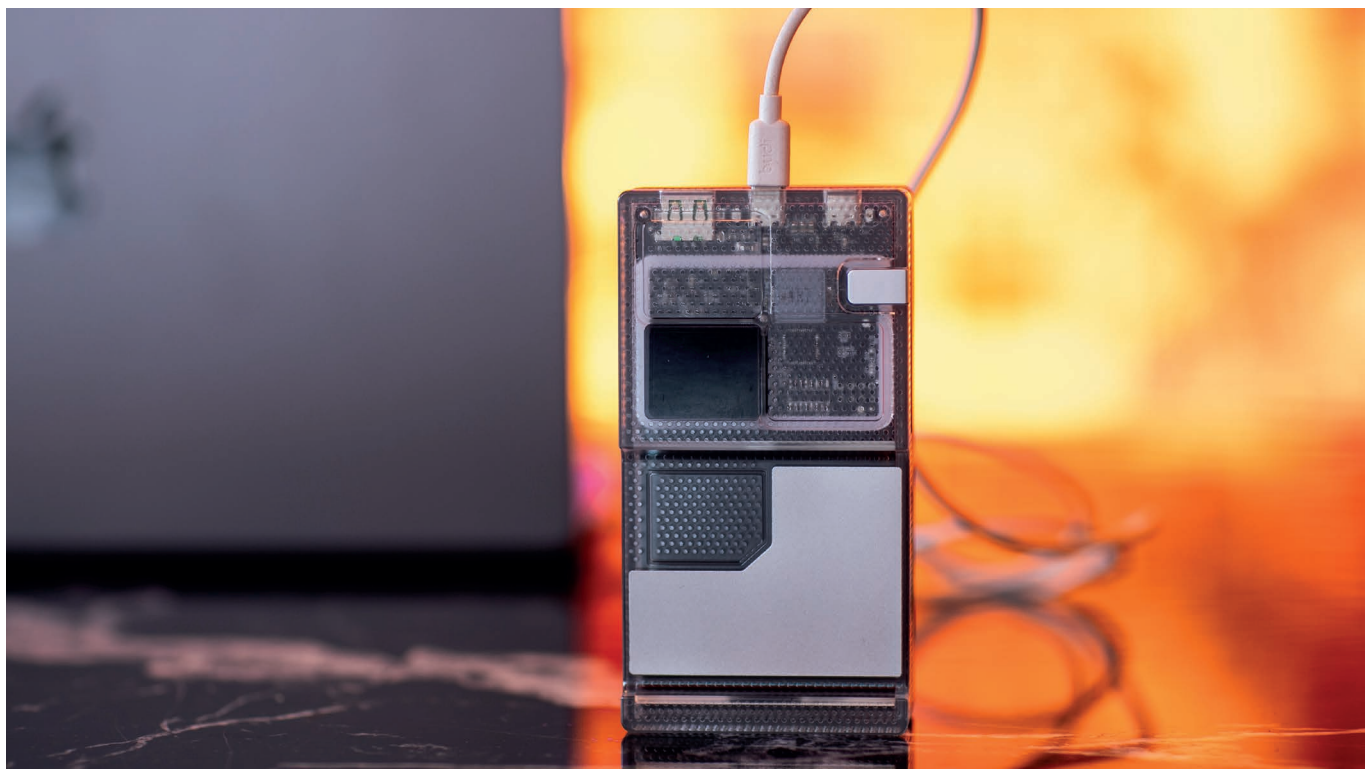


Pythagoras Powerbank
APW004

Within a serene bamboo haven, a reliable companion emerges - a powerbank. With a 10.000mAh capacity, a swift 15W output and the modern convenience of a USB-C door. It effortlessly bridges the realms of nature and technology.

↗ 13 x 7 x 2 cm
⊘ PDP - 50 x 30 mm (max.)





Reference									
APW001	137	7,6 x 14,7 x 1,8 cm		10 000			18W	-	●
APW002	138	7,3 x 10,6 x 1,9 cm		6 000			18W	-	●
APW003	139	13 x 7 x 2 cm		10 000			10,5W	12W	●
APW004	139	13 x 7 x 2 cm		10 000			15W	15W	●
APW005	135	7,3 x 6,7 x 1,4 cm		5 000	-		22,5W	15W	●●○
APW006	134	6,8 x 14,3 x 4 cm		30 000			15W	-	●
APW007	136	7 x 13,1 x 3,8 cm		20 000			30W	-	●
APW008	135	8,7 x 7,1 x 1,8 cm		10 000	-		22,5W	15W	●●○
AWC001	130	7,3 x 13 x 10,3 cm		5 000	-		18W	15W	●
AWC002	131	ø9 x 1 cm		-	-	-	15W	●	●
AWC003	131	ø9,7 x 0,7 cm		-	-	-	15W	●	●
AWC005	133	29,8 x 7,9 x 2 cm		-	-	-	15W	●○	●○



- Product Page
- Materials
- Capacity Case (mAh)
- Charging Connector USB-A
- Charging Connector USB-C
- Max Output Power
- Wireless Charging
- Available Colours



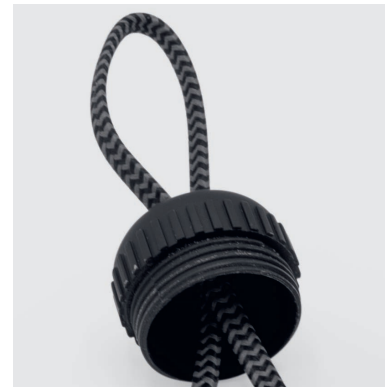
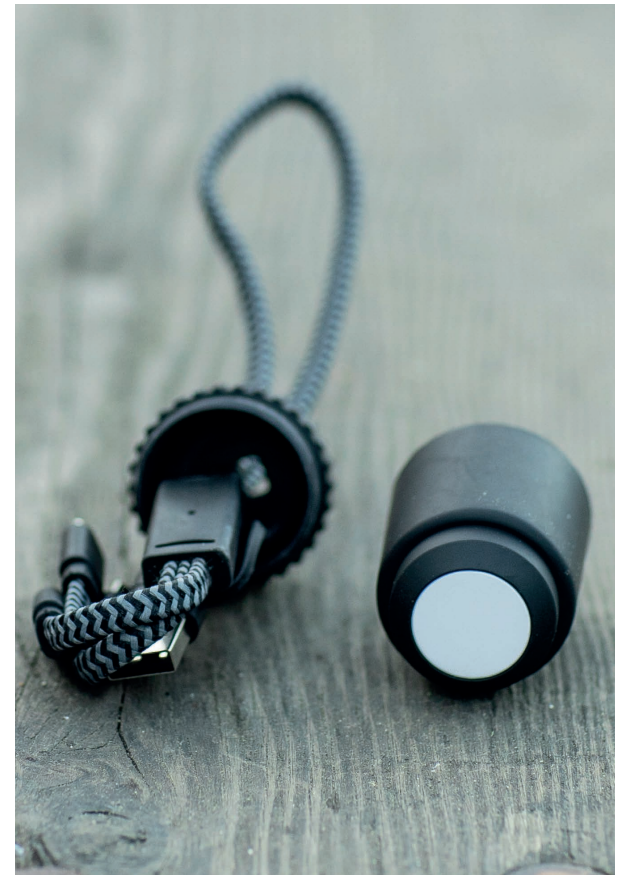


Franklin Cable

ACB002

A cable reimagined: rPET body intertwines with dual USB-A and USB-C heads, with 20W power allowing fast charging. Not just a link, but a statement of eco-conscious energy. Plug into a world of effortless, mindful charging.

↗ 4,1 x 2,7 x 8 cm
 ⌀ PDP - 25 x 30 mm (max.)



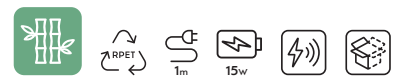
Versacord Cable

ACB001

Embrace the 5-in-1 cable: adaptable, loopable for on-the-go. Its braided rPET strength and recycled ABS connectors redefine sustainability. A smarter charge that's kind to both devices and the Earth.

↗ 3,6 x 6cm
 ⌀ PDP - 20 mm (max.)





Feynman Cable

ACB004

Embark on a new era of connectivity with our 1m cable. With a body intricately crafted from bamboo and rPET, it flawlessly unites USB-A, USB-C, Micro- USB, Lightning and Wireless Charging. Elevate your tech experience while fast charging.

∅ 5,2 x 105,2 cm
 ∅ LSR - ∅25 mm (max.)



Asimov Cable

ACB003

Our innovative 5-in-1 fast charging cable. With connectors for USB-A, USB-C, Micro-USB and Lightning, it's a versatile companion. Encased in an individual cardboard box, the cable displays sustainability with its rPET jacket.

∅ 3,4 x 120 cm
 ∅ LSR - ∅25mm (max.)



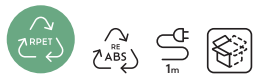


Ramanujan Cable

ACB008

Revolutionize your charging experience with our 1m rPET cable. Seamlessly connecting USB-C to Lightning, it's eco-friendly, efficient and ready to power up your devices effortlessly. Upgrade your tech with a sustainable twist.

∅ 0,3 x 100 cm
 Ø PDP- 15 x 10 mm (max.)

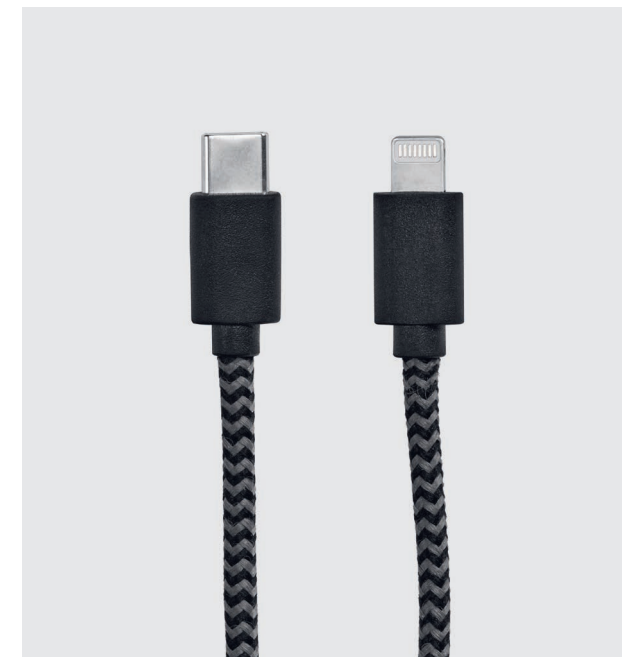
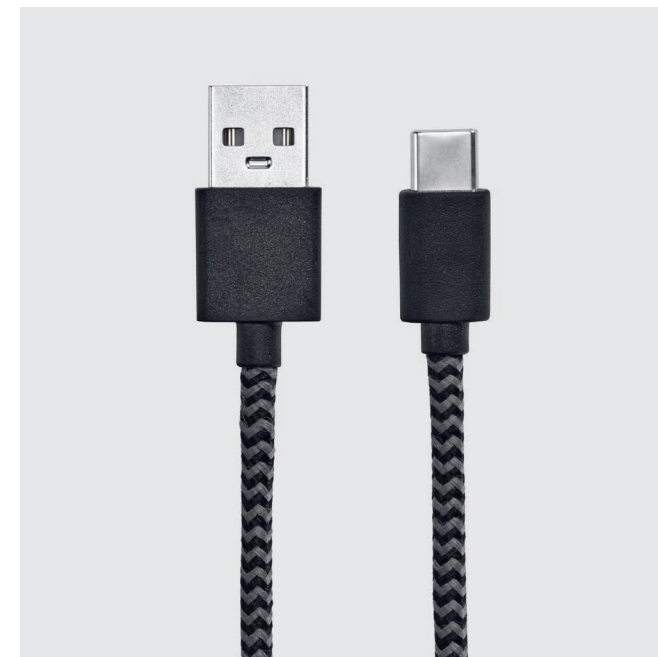


Leibniz Cable

ACB007

Upgrade your tech effortlessly with our eco-friendly 1m rPET cable, seamlessly connecting USB-C to USB-A. Simplify your connections, reduce waste and embrace innovation.

∅ 0,3 x 100 cm
 Ø PDP- 15 x 10 mm (max.)





Sagan Cable

ACB005

Designed in rPET, this cable easily holds all of your daily tech and lifestyle necessities, thanks to its smart design and system of functional outputs (4 in 1). It will be your perfect everyday companion, no matter what your day has in store.

∅ 2,7 x 16,6 cm
 Ø LSR - 15 x 15 mm (max.)



Koch Cable

ACB006

Our 1m rPET cable, a design that seamlessly links USB-C to USB-C, offers a gateway to your digital world. With sustainability at its core, it's more than just a cable: it's your eco-conscious choice for elevating your tech experience.

∅ 0,3 x 100 cm
 Ø PDP- 15 x 10 mm (max.)



Bernoulli Cable

ACB009

Elevate your charging game with our 1m rPET cable, designed to simplify and accelerate your digital life. It connects USB-A to Lightning, ensuring not only speedy charging but also a sustainable choice. Enjoy greener tech solutions.

∅ 0,3 x 100 cm
 Ø PDP- 15 x 10 mm (max.)